

SCHOLAR ARCHITECT 2021

English edition

COORDINATOR: Anda-Ioana SFINTEȘ

TRANSLATED BY Florina TUFESCU

Editura universitară "Ion Mincu"

Bucharest, 2022

This volume is the full translation of **Scholar Architect 2021**

(Romanian edition) ISBN: 978-606-638-231-1

<https://doi.org/10.54508/9786066382311>

First published 2021 (Romanian edition) by Editura universitară "Ion Mincu"

Developed within the framework of the **SCHOLAR ARCHITECT** project

"Ion Mincu" University of Architecture and Urban Planning

www.uauim.ro/cercetare/scholarh

www.facebook.com/scholarhuauim

© COORDINATOR: Anda-Ioana SFINTEȘ

© AUTHORS: Magdalena STĂNCULESCU, Oana Anca ABĂLARU OBANCEA, Anda-Ioana SFINTEȘ, Ionuț ANTON, Ana Daniela ANTON, Andrei MITREA, Dana MILEA, Ioana Elena ZACHARIAS VULTUR, Adrian MOLEAVIN, Marian MOICEANU, Tiberiu FLORESCU, Simona MUNTEANU, Georgică MITRACHE, Horia MOLDOVAN, Melania DULĂMEA, Anca MITRACHE, Niculae GRAMA, Dan MARIN

TRANSLATOR: Florina TUFESCU

DTP: Anda-Ioana SFINTEȘ / Diana RUSU

DESIGN: Anda-Ioana SFINTEȘ / Ioana BOGHIAN-NISTOR / Diana RUSU

COVER IMAGE: Diana RUSU

ISBN 978-606-638-246-5

<https://doi.org/10.54508/9786066382465>

Descrierea CIP a Bibliotecii Naționale a României

Scholar Architect 2021 / coord.: Anda-Ioana Sfinteș;

translated by Florina Tufescu. - English edition. -

București: Editura Universitară "Ion Mincu", 2022

ISBN 978-606-638-246-5

I. Sfinteș, Anda-Ioana (coord.)

II. Tufescu, Florina (trad.)

72

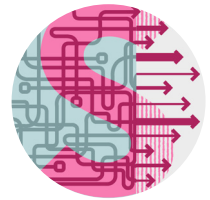
Attribution-NonCommercial-NoDerivatives 4.0 International (CC BY-NC-ND 4.0)



This material can be copied and redistributed in any medium or format, with adequate attribution, with no derivatives and only for non-commercial purposes.

© 2022 Editura Universitară "Ion Mincu", Str. Academiei 18-20, sect. 1, București, cod 010014

editura.uauim.ro / Tel.: 40.21.30.77.193



SCHOLAR ARCHITECT

The Romanian edition was developed within
the framework of the project

SCHOLAR ARCHITECT 2021
Improving the quality of research and teaching
in architectural education

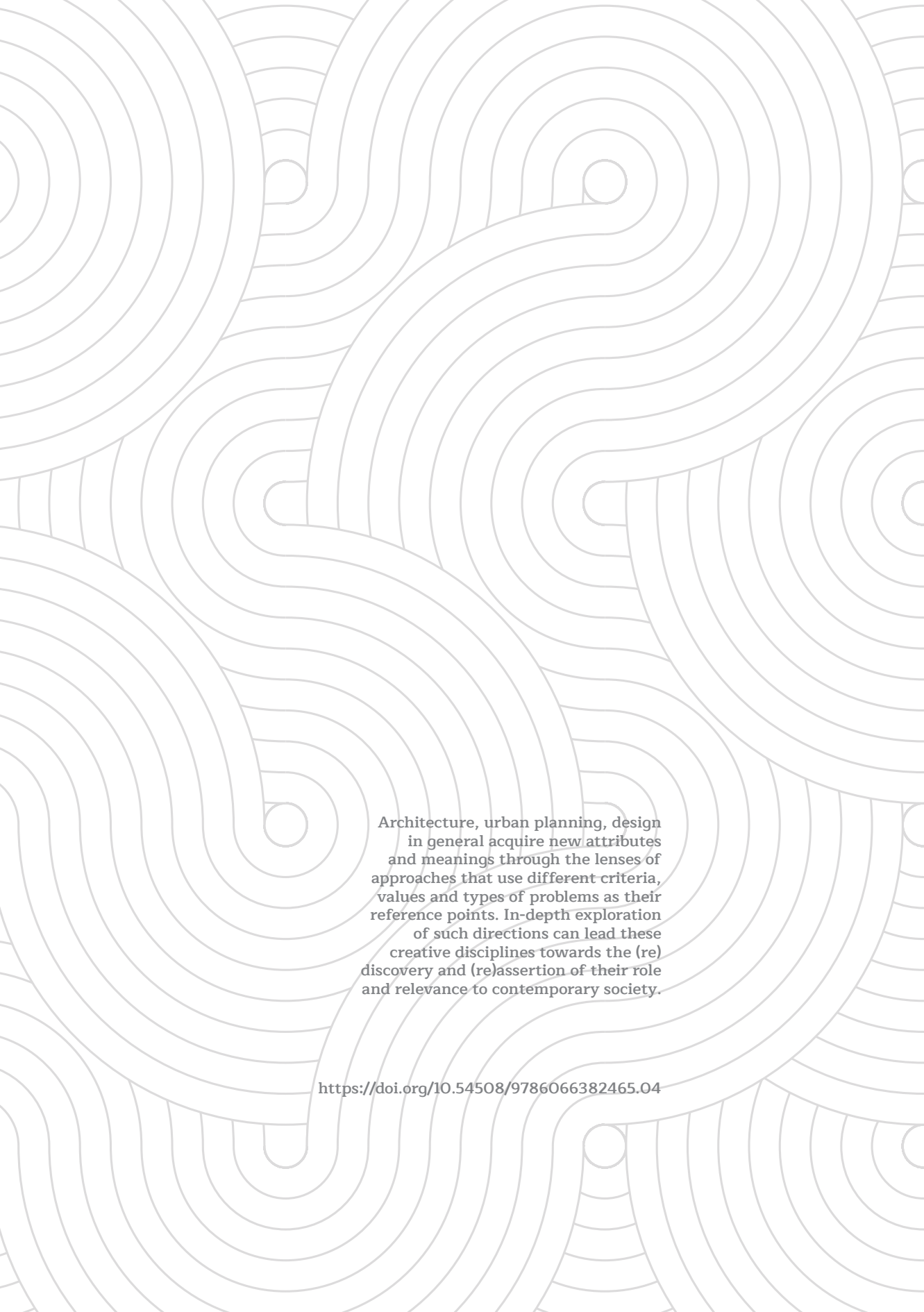
Project financed by CNFIS-FDI-2021-0069

The English edition was translated from Romanian within
the framework of the project

SCHOLAR ARCHITECT 2022
Research and implementation of new trends,
innovations and experiments in architecture and
related fields of education


Project financed by CNFIS-FDI-2022-0075

The Institutional Development Fund, Domain 5:
Improving the quality of teaching, including the
observance of professional and academic ethics



Architecture, urban planning, design in general acquire new attributes and meanings through the lenses of approaches that use different criteria, values and types of problems as their reference points. In-depth exploration of such directions can lead these creative disciplines towards the (re)discovery and (re)assertion of their role and relevance to contemporary society.

<https://doi.org/10.54508/9786066382465.04>



Contemporary approaches

Univ. Assist. Anda-Ioana SFINTEȘ PhD Arch.

Assoc. Prof. Ionuț ANTON PhD Arch.

Univ. Assist. Ana-Daniela ANTON PhD Arch.

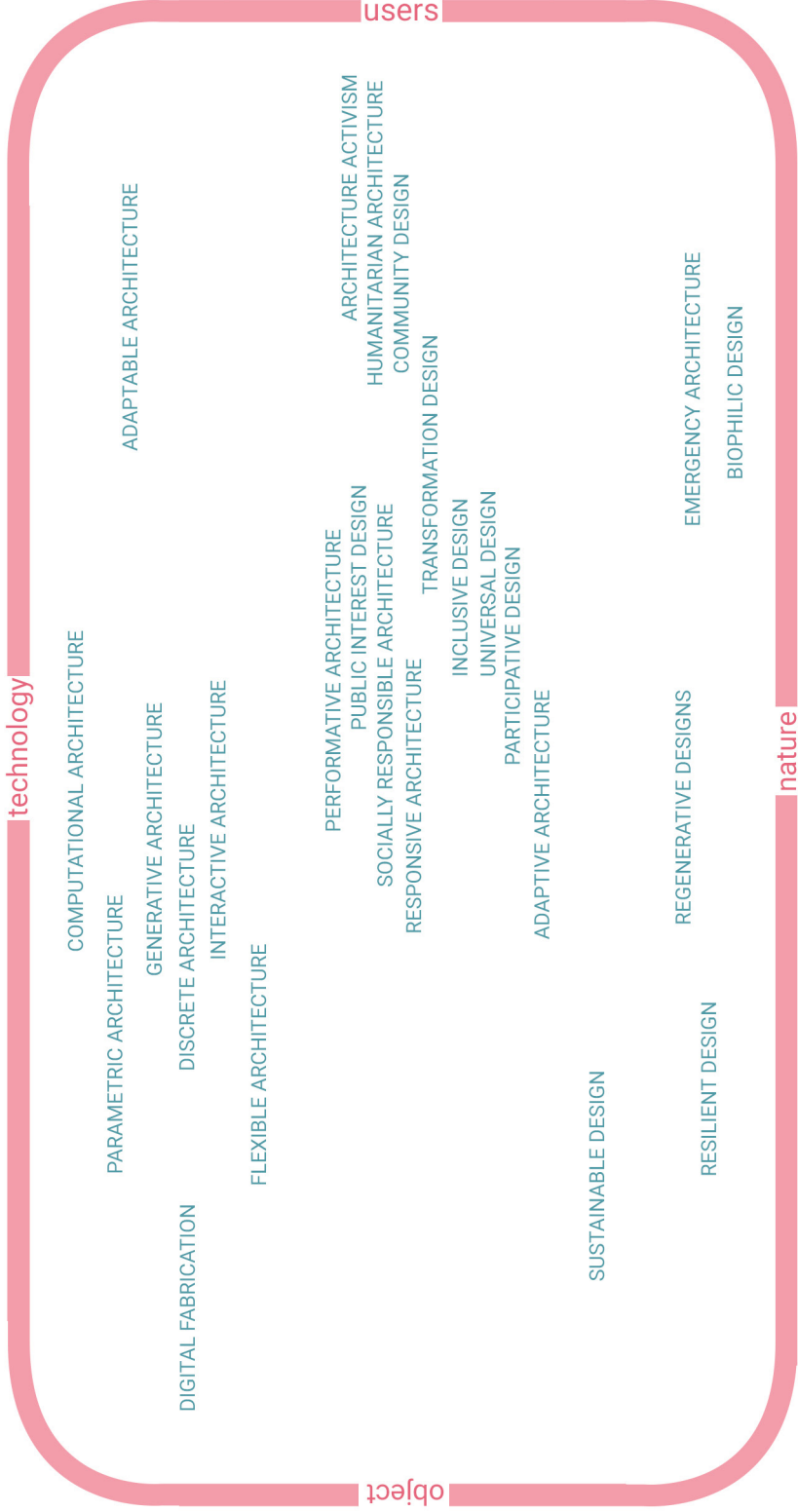


Diagram of contemporary approaches in architecture, urban planning, interior design and related disciplines, aligned in four directions to which they relate differently.

The approaches that will be mentioned in the subsequent pages and the categories in which they are included are by no means exhaustive; they are meant rather to draw attention to the diversity entailed by contemporary design, which springs from the problems it should respond to, and they provide a thread that might be followed in the attempt of finding one's own approach. As a matter of fact, many of these approaches could easily be included in other "architectures" categories, just as they might be superposed and lead to new types of approaches or be included in other categories, based on different criteria; these possibilities are noted, to some extent, in the diagram that opens this chapter. The following pages are thus an invitation to explore architecture, urban planning, interior design, etc. by considering the mentioned categories and approaches as first points of reference.

The terms ARCHITECTURES / ARCHITECTURE / PROJECT / DESIGN are used to designate built space and the objects that populate it, buildings and architectural ensembles, urban configurations, etc. from the point of view of design and they are easily interchangeable.

Each category and open list of approaches is followed by a few references to books from the de Gruyter database, which are permanently accessible to the members of UAUIM as a result of their acquisition through the *Scholar Architect* project. The inclusion of these references underlines the importance of documentation for the detailed understanding of the problems raised by each approach. Consulting these and other sources, identified by the researchers themselves, will lead them to the discovery of greater depth, superpositions, intersections, of characteristics, values, possibilities for dialogue and negotiation, etc., within as well as between the different approaches.

Innovating in today's society also means adding a personal touch; in creative fields such as architecture and the related disciplines, innovating can also mean approaching these disciplines through the lens of one's personal interests. The parameters of the chosen approach can encompass contextual aspects, aspects related to programme, functions, requirements and needs as well as aspects that concern the architect's identity and the directions they follow in search of professional and personal development. In some cases, the design theme allows for enough flexibility to enable the architect's self-discovery by means of the project while in others it tests their limits, forcing them to negotiate with themselves. Thus, the following approaches are also an invitation to the students to take advantage of the flexibility of university projects in order to seek and test as many directions as possible, but from a position of knowledge.

Architectures that respond to changes and stimuli

_architectures that respond to environmental changes, to changes in the users' needs, requirements and wishes or to different stimuli and which can be modified from the point of view of function, technology or aesthetics

ADAPTABLE ARCHITECTURE

ADAPTIVE ARCHITECTURE

FLEXIBLE ARCHITECTURE

INTERACTIVE ARCHITECTURE

RESPONSIVE ARCHITECTURE

...

References

Kretzer, M. & Hovestadt, L. (2014). *ALIVE: Advancements in adaptive architecture*. Wien: Birkhäuser. <https://doi.org/10.1515/9783990436684>

Schumacher, M., Schaeffer, O. & Vogt, M. (2012). *MOVE: Architecture in Motion - Dynamic Components and Elements*. Berlin, Boston: Birkhäuser. <https://doi.org/10.1515/9783034608541>

Wong, L. (2016). *Adaptive Reuse: Extending the Lives of Buildings*. Berlin, Boston: Birkhäuser. <https://doi.org/10.1515/9783038213130>

Architectures centred on social impact

_architectures centred on social issues and needs, which seek to support society, including disadvantaged groups, and which aim at non-discriminatory access to resources, at the common good, justice and social equity, the public interest, etc.

ARCHITECTURE ACTIVISM

HUMANITARIAN ARCHITECTURE

PUBLIC INTEREST DESIGN

SOCIALLY RESPONSIBLE ARCHITECTURE

TRANSFORMATION DESIGN

...

References

Clouette, B. & Wise, M. (2017). *Architectures of Humanitarian Space: Forms of Aid*. Berlin, Boston: Birkhäuser. <https://doi.org/10.1515/9783035608267>

GRAFT (2016). *Architecture Activism*. Berlin, Boston: Birkhäuser. <https://doi.org/10.1515/9783035608540>

Jonas, W., Zerwas, S. & von Anshelm, K. (2015). *Transformation Design: Perspectives on a New Design Attitude*. Berlin, München, Boston: Birkhäuser. <https://doi.org/10.1515/9783035606539>

Architecture for all

_concern with designing buildings that are accessible to all and which respond in one way or another to the needs of all categories that the building has an impact on (from investors to users, from people grouped in communities to users with different types of special needs, etc.)

COMMUNITY DESIGN

INCLUSIVE DESIGN

PARTICIPATIVE DESIGN/CO-DESIGN

UNIVERSAL DESIGN

...

References

Christ, W. (2009). *Access for All: Approaches to the Built Environment*. Berlin, Boston: Birkhäuser. <https://doi.org/10.1007/978-3-0346-0379-9>

Herwig, O. (2012). *Universal Design: Solutions for Barrier-free Living*. Berlin, Boston: Birkhäuser. <https://doi.org/10.1515/9783034609661>

Michel, R. (2019). *Integrative Design: Essays and Projects on Design Research*. Berlin, Boston: Birkhäuser. <https://doi.org/10.1515/9783038215318>

Architectures that consider the impact of people on the environment and viceversa

_architectures which explicitly consider the impact of design on the environment and resources as well as the capacity of architecture to face or respond to the challenges posed by nature and the environment, without excluding the connection with nature as a human need

BIOPHILIC DESIGN

EMERGENCY ARCHITECTURE

REGENERATIVE DESIGNS

RESILIENT DESIGN

SUSTAINABLE DESIGN

...

References

Berardi, U. (2013). *Moving to Sustainable Buildings: Paths to Adopt Green Innovations in Developed Countries*. Versita, London: De Gruyter Open Poland. <https://doi.org/10.2478/9788376560113>

Bott, H., Grassl, G. & Anders, S. (2019). *Sustainable Urban Planning: Vibrant Neighbourhoods – Smart Cities – Resilience*. München: DETAIL. <https://doi.org/10.11129/9783955534639>

Kellert, S. (2018). *Nature by Design: The Practice of Biophilic Design*. New Haven: Yale University Press. <https://doi.org/10.12987/9780300235432>

Schröpfer, T. (2015). *Dense + Green: Innovative Building Types for Sustainable Urban Architecture*. Berlin, Boston: Birkhäuser. <https://doi.org/10.1515/9783038210146>

Architectures that use advanced digital tools

_architectures which use the digital environment in the design and building of architectural artefacts, in pursuit of a digital continuum from the first stages of conceptual development to documentation and component representation, up to the use of technologies with numerical control fabrication systems

COMPUTATIONAL ARCHITECTURE

DIGITAL FABRICATION

DISCRETE ARCHITECTURE

GENERATIVE ARCHITECTURE

PERFORMATIVE ARCHITECTURE

PARAMETRIC ARCHITECTURE

...

References

- Bernstein, P. (2018). *Architecture | Design | Data: Practice Competency in the Era of Computation* (1st edition). Birkhäuser. <https://doi.org/10.1515/9783035610444>
- Hauschild, M., & Karzel, R. (2012). *Digital Processes: Planning, Designing, Production* (1st edition). Birkhäuser. <https://doi.org/10.11129/detail.9783034614351>
- Marble, S. M. S. (2012). *Digital Workflows in Architecture: Design – Assembly – Industry*. Birkhauser Architecture. <https://doi.org/10.1515/9783034612173>
- Retsin, G., Jimenez, M., Claypool, M., & Soler, V. (Ed.). (2019). *Robotic Building: Architecture in the Age of Automation* (1st edition). DETAIL. <https://doi.org/10.11129/9783955534257>