

REACTIVATION OF A SPACE DEDICATED TO THE COMMUNITY. STUDENT PROJECTS

Abstract: The projects that follow were developed by the participants (4th to 5th year students at “Ion Mincu” University of Architecture and Urban Planning in Bucharest, Romania), as a practical exercise during the *Errare Humanum Est. Errors, Mistakes and Failures in Design – Execution – Use* workshop. The theme was that of reactivating a space in Satul Banului, a space with a high value for the community - as a point of water (there is a spring that provided water for the community and the cattle passing through the village), a place of worship (there is a roadside cross) and a place of gathering.

A NARRATIVE OF FEELINGS

Our intervention aims to integrate the two valuable elements for the Satul Banului – the well and the cross – into a journey that narrates *the story of the cyclical nature of life*, as this very place and these objects bear witness to the long work of a family.

Speaking of the narrative, we have structured the stages of the route based on *the moments of the plot*, each aiming to evoke a series of emotions and sensations – controlled through the interplay of textures, lights, objects, the presence or absence of water, *the primordial symbol of genesis and cyclicity*. The initium and terminus points of this journey become the sources of water themselves – the spring, and later, the well.





Ala BUZILAN



Casian CIUREZU



Andreea PETRE



Mara ȘERBAN



Irina TATOMIR



Exposition

The first part of the route, marked by a small 'Y' symbol, is a place of discovery, where I wanted to talk about the initial change of textures, from the curiosity through a composition, to the rocky, difficult terrain, to the winding water possible to continue the route, flows and creates its own sounds muddy, hitting the bed, leading to the muffled sound of the water, and I notice the small meanders that create a path among the stones.

Intrigue

Adolescence, youth - marked by a small house-like shape, is a place of discovery, where I wanted to talk about the initial change of textures, from the curiosity through a composition, to the rocky, difficult terrain, to the winding water possible to continue the route, flows and creates its own sounds muddy, hitting the bed, leading to the muffled sound of the water, and I notice the small meanders that create a path among the stones.

Story Evolution

For us, symbolizing maturity - compromise, rationality, order - the route takes place for a long time, where I wanted to talk about the initial change of textures, from the curiosity through a composition, to the rocky, difficult terrain, to the winding water possible to continue the route, flows and creates its own sounds muddy, hitting the bed, leading to the muffled sound of the water, and I notice the small meanders that create a path among the stones.

Climax

Old age - achievement, Death, the end - it marks the wisdom, peace, rest - is: end of the cycle, loneliness, where I wanted to talk about the initial change of textures, from the curiosity through a composition, to the rocky, difficult terrain, to the winding water possible to continue the route, flows and creates its own sounds muddy, hitting the bed, leading to the muffled sound of the water, and I notice the small meanders that create a path among the stones.

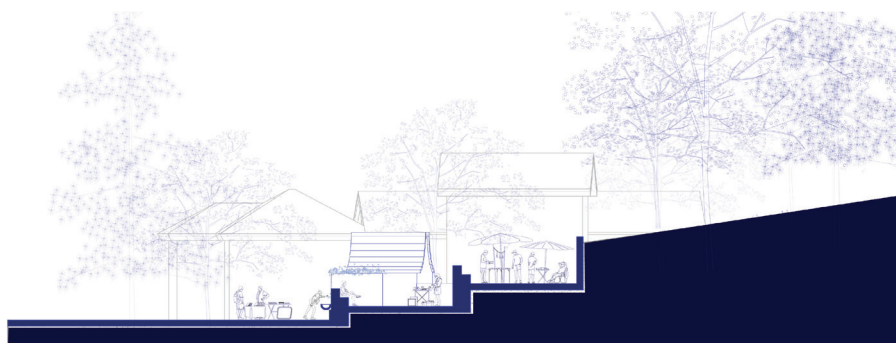
The ending

This tension is suddenly stopped by the meeting with water, but I can still feel it. The vegetation is abundant. The spring, like the cismela, is located in a similar square, marked by a small circle. The spring is accompanied by a water mirror that reminds of the partner element of this journey.



THE STORY OF THE WATER SOMMELIER

“Eternity was born in the village”. We concentrated the essence of life in a village in a system of squares, of places for the community and for those outside of it, which connect on a macro level, but at the same time stay a creed of simplicity. The fountain, the roadside cross, the gathering place and the people are the elements that support and carry out our project. The light comes out of the roadside cross and the pavement – a symbol of peace, of a place where life goes on quietly.





Maria Alexandra GHICA



Monica DRĂGHICI



Andreea Elena ISTRATE



Silviu-Daniel ARNĂUTU



Irina SARĂU



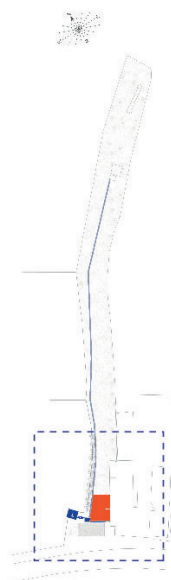
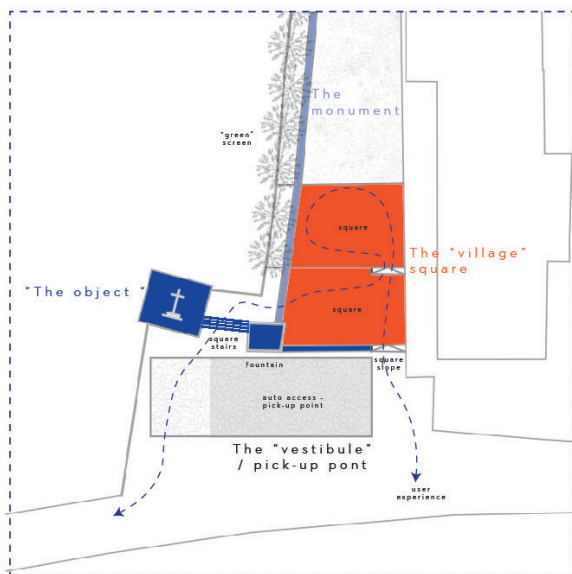
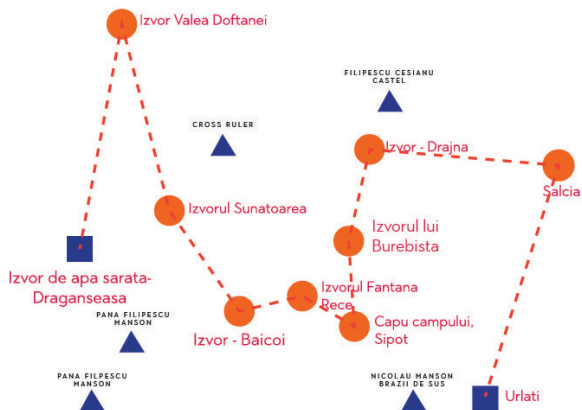
LINKING
WATER SPRINGS

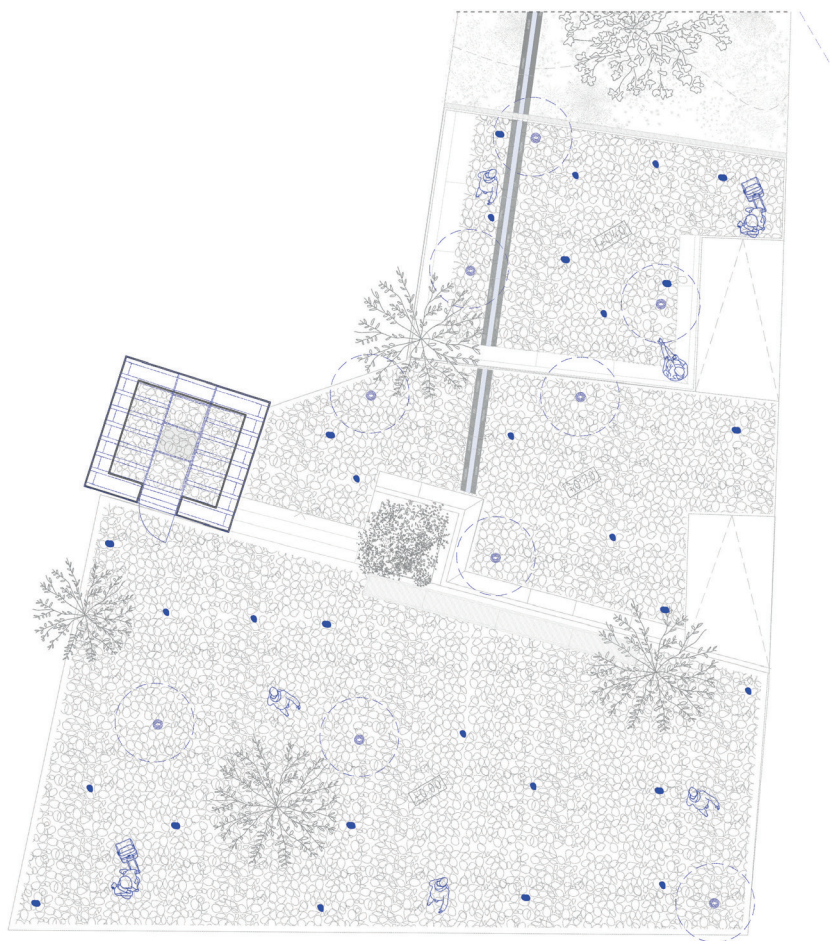


TRADITION -
the village square & fountain

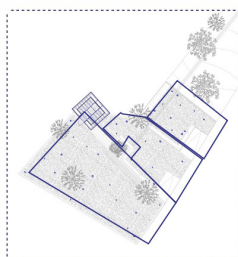


THE STORY OF THE
WATER SOMMELIER

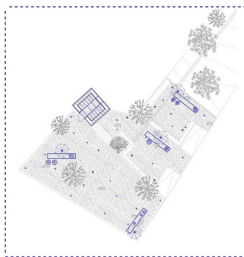




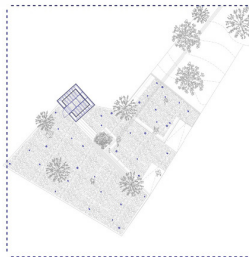
1m Plan



3-square system



flea market



gathering place

FOLLOWING THE WATER

The project wishes to activate an important and historical area in Măgureni, the water fountain. A social attractor in this context needs special attention, a natural treatment with finishes made out of local materials, but not in such a way that it produces discomfort or lack of security. The design is split in three areas, the water fountain, the alleyway and the memorial. The water fountain is a social zone, that comes alive during religious ceremonies, but it also serves as a meeting point. The alley follows the natural slope of the terrain, allowing access to people of all ages. Lastly, the memorial serves as a finish point, the whole concept illustrating the duality of water. At the foot of the slope, the water is social and bubbly and focuses on groups, while, at the end of the journey, the murmur of water encourages introspection and meditation.





Ana-Maria AVRAMESCU



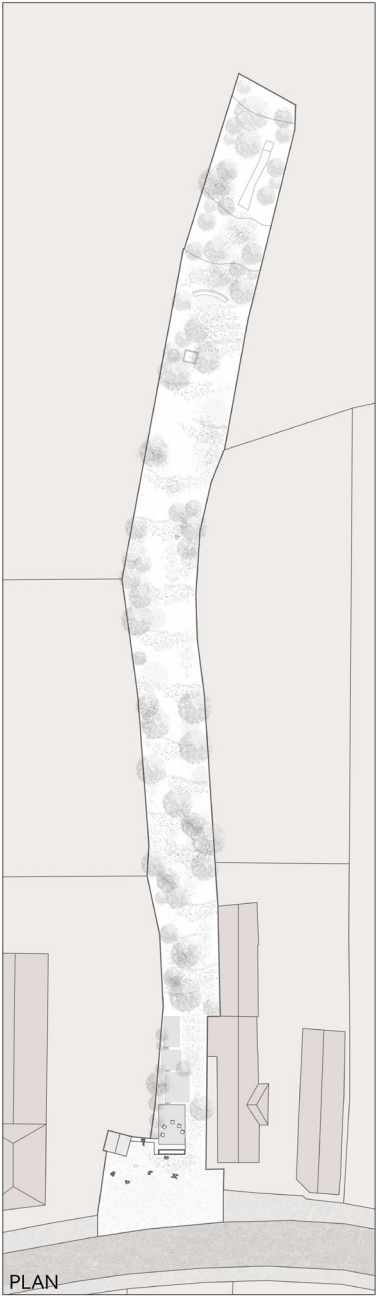
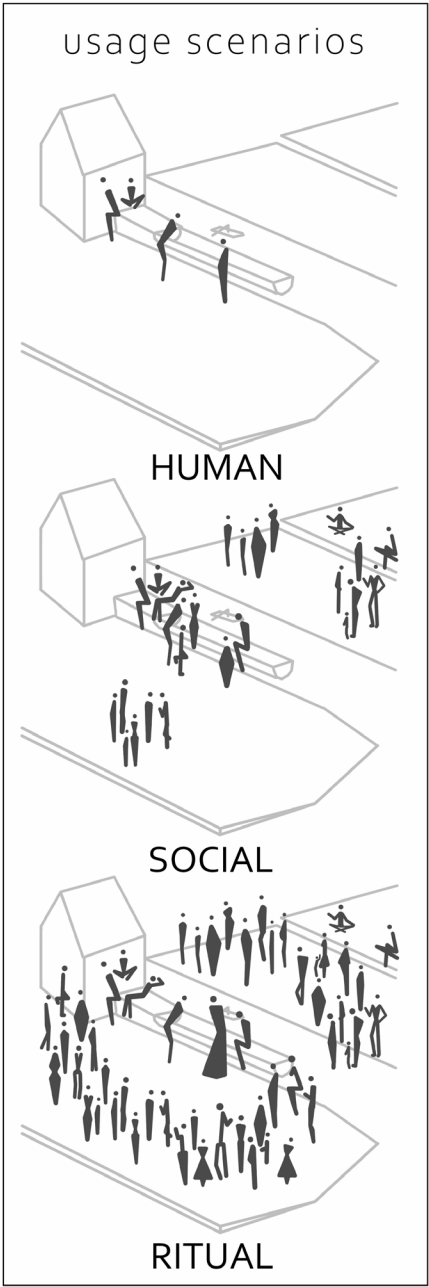
Adelina BURULEA-DRAGOȘ



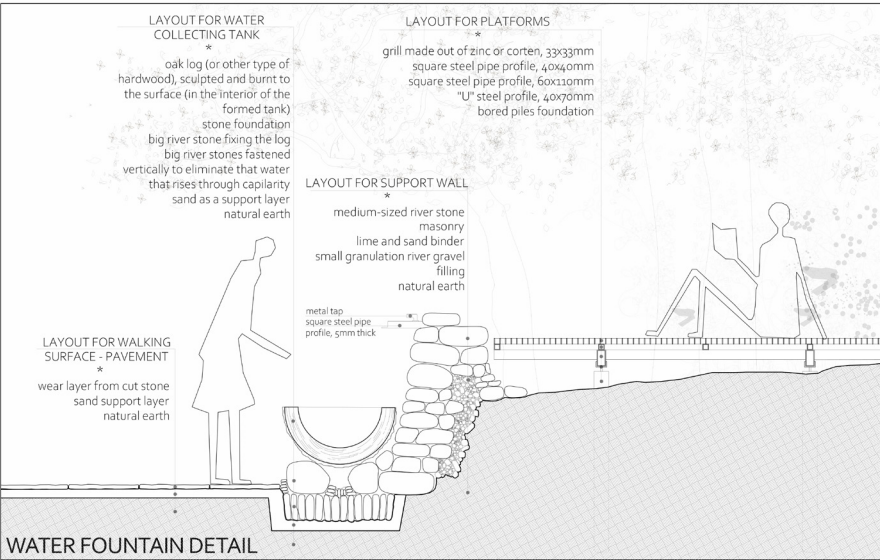
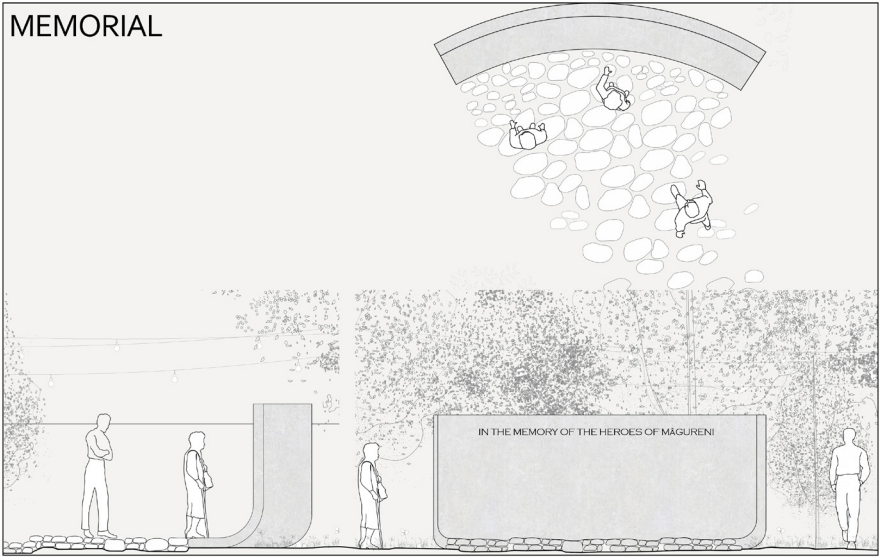
Elena GUGUILĂ



Eliza VOICULESCU



MEMORIAL

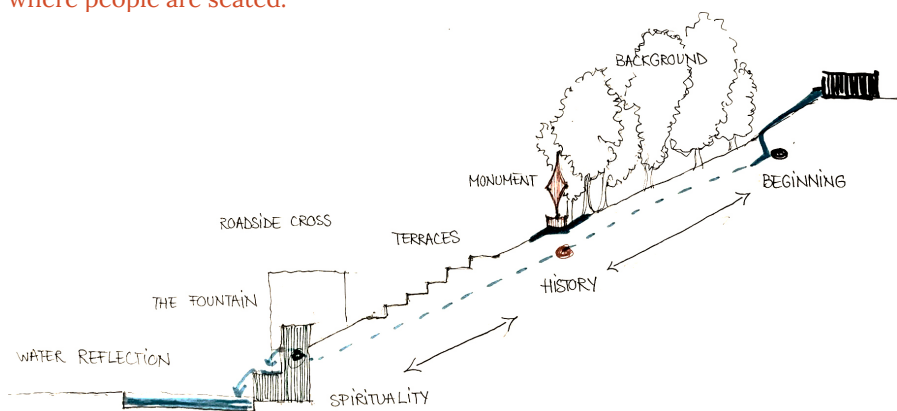


THE PATH OF WATER

The path of the water, from the moment it springs to where the villagers manage to reach it, has a symbolic route. The link between people and water is very strong, it is an important meeting place, a gathering place, around which societies have been created – a popular symbol of purification.

We associated the course of the water with the cycle of life and we divided the route into three main areas: the first area represents the beginning, from where the water springs; the second area is represented by the course of the water, winding, with historical links; and the third area, a spiritual one, represented by the roadside cross and the fountain, is the symbolic outcome of this route.

In order to materialize these ideas, we designed a connection between the upper and lower parts of the site: namely between the fountain and the roadside cross, and the place where the water springs; the heart of the site, the central point, is marked by a landmark, a monumental axis. The idea of the roadside cross marking the intersection was taken further and we took this symbol to bring a new intersection point, referring to the Roman city. The steps connect the religious side of the fountain – an area of the sacred, with the profane side – where people are seated.





Andreea DĂNILĂ



Catrinel PASCU

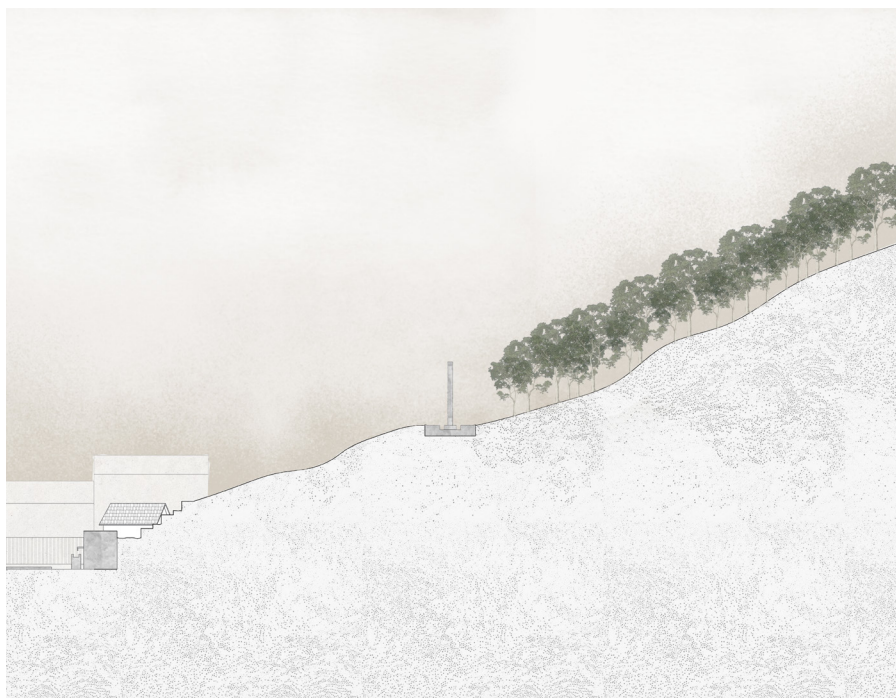


Ioana SCĂRLĂTESCU



Marta ZDRENCIUC



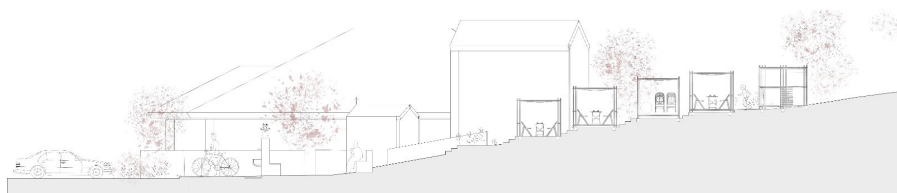


BEYOND THE WELL

The well and roadside cross from Satul Banului are located in an important point and fulfill a vital role in the community, that's why we come with a reinterpretation of the ensemble that works propitiously.

Located on the hill that shelters them, this project proposes a reinvention that pays homage to ancestral traditions. In the village, in the past, in front of the old inn, people sold their products at fairs. In our vision, this place turns into a lively market, crowned by a children's playground.

Above the well, we created a circular meeting space where the priest can hold services on holy days. This architectural revival not only pays homage to traditions, but also becomes a vibrant community center where past and present meet in harmony.





Elena CLAPAN



Mara IANCUȘ



Simona MARICA



Azaria Bianca RUSU

